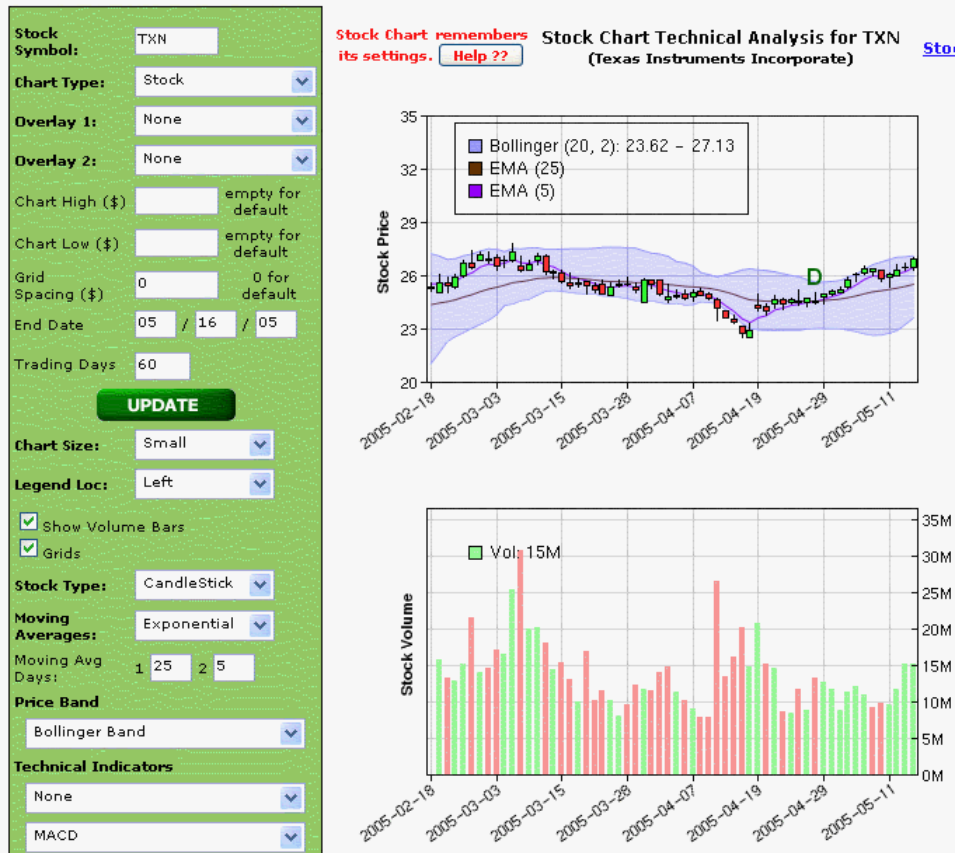


### Chapter 3 - Stock Charts

Click [PDF](#) to get a PDF printable version of this help file.

Stock Charts is used to chart stock price or ATM IVs or SVs or the Platinum Risk Free interest rate. Stock Charts also performs technical analysis charts for stock technical rankers inside Platinum. Every time you click UPDATE in Stock Charts, it saves the chart and technical indicator settings chosen. The technical settings at the lower left are used by the Platinum stock technical rankers and the Platinum stock technical rankers initialize their values using the same settings. So Stock Charts can be used to control the saved default settings in the Platinum Stock Rankers. The Chart selections and an example of the output are shown next:



Percent Change

RSI

Slow Stochastic

**Indicator Parameters**

Per 1 days	Per 2 days	Per 3 days	Range SD or %
12			

Avg True Range

12

Bollinger Band Width

12 2

Fast Stochastic

12 4

MACD

25 12 8

Percent Stock Change

1

RSI

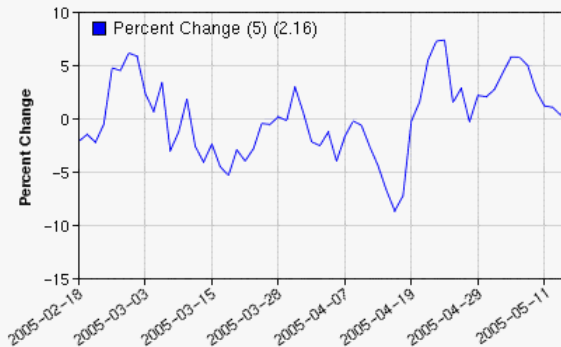
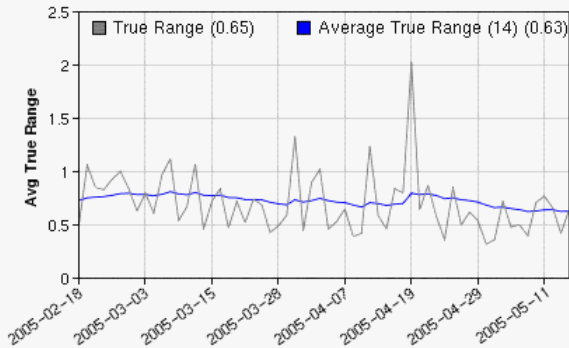
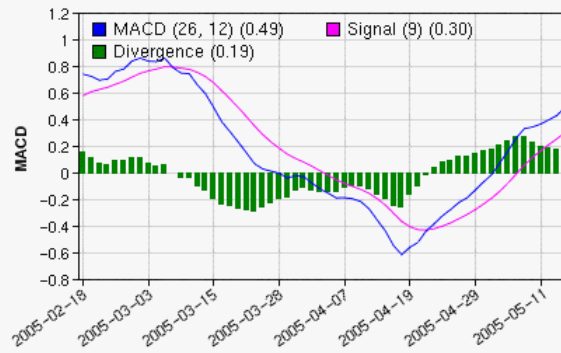
11 25

Slow Stochastic

15 4

Dividend Dates	Dividend Yields (%)
2005-04-28	0.4
2005-01-27	0.5
2004-10-28	0.4
2004-07-28	0.4
2004-04-28	0.3
2004-01-28	0.3

Previous Split Dates	Split
2000-05-22	2 : 1
1999-08-16	2 : 1
1997-11-21	2 : 1



The left side entry boxes allow you to control:

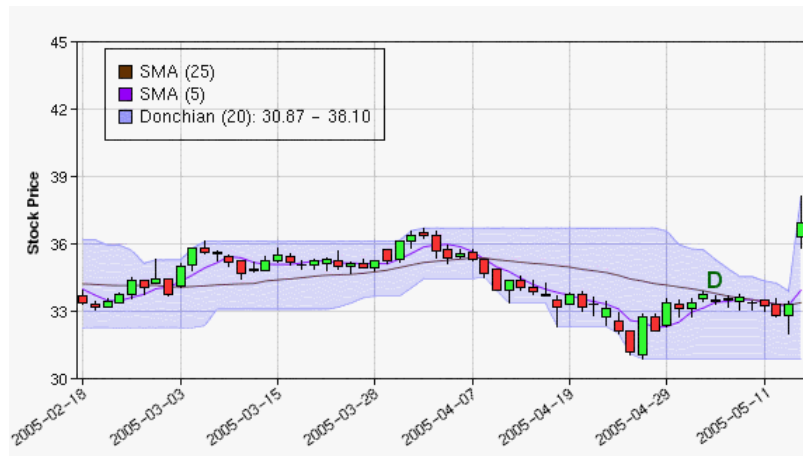
- The stock symbol.
- The chart type with these options:
  - Stock OHLC
  - 7-30 day ATM IV
  - 30-60 day ATM IV
  - 60-90 day ATM IV
  - > 90 day ATM IV
  - 7-149 day ATM IV

When an IV is selected, technical indicators that require OHLC data are deselected. But all others are active so you can look at the Bollinger Bands of an ATM IV as well as Percent Change, MACDs and Moving Average crossovers. When no ATM IV data is present in a time period, the chart is blank or freezes the values.

- Two overlay charts can go on top of the stock chart and you have these options:
  - 7-30 day ATM IV
  - 30-60 day ATM IV
  - 60-90 day ATM IV
  - > 90 day ATM IV
  - 7-149 day ATM IV
  - 6 day SV
  - 10 day SV
  - 20 day SV
  - 100 day SV
  - Risk Free Interest Rate

The latter allows you to see the interest rates used by the Automatic Interest Rate setting in General Settings.

- The y-axis high and low limits, empty in this case for default scaling.
- Grid spacing. Leave at 0 to get graphic default autogrids.
- The chart end date.
- The number of trading days before the end date.
- The chart graphic size: Small, Medium (default until you click UPDATE), large, huge.
- The legend location in the stock chart (left is default).
- Volume Bars graph option.
- Show chart grids option.
- Show types: Candlesticks or Open Hi Lo Close.
- Moving Averages: Simple or Exponential. (See Moving Average Help file)
- Moving Averages days. You can specify the days for two moving averages overlaid on the chart.
- Stock and IV chart bands:
  - Bollinger Bands. Bollinger Bands are placed two standard deviations above and below the moving average, which is usually 20 days. Using two standard deviations ensures that 95% of the price data will fall between the two outside bands. The Bollinger Bands days and standard deviation are controlled by the values below "Bollinger Band Width".
  - Donchian Channel. A moving average indicator developed by Richard Donchian. It plots the highest high and lowest low over the last period time intervals. The period is 20 days. Can only be used with the stock chart. The Donchian Channel days uses the Bollinger Bands days setting.
  - Envelope Bands. Price envelopes (or percentage bands) are plotted at a set percentage above and below a moving average. In this case 20 days simple moving average and +/- 10% percentage. The Envelope Bands days uses the Bollinger Bands days setting. 10% is fixed.



- Technical Indicators: Average True Range, Bollinger Band Width, Fast and Slow Stochastic, MACD, Percent Change (the simple percent change in value between two values at different days), RSI. Read the Help file for each indicator for more information.
- Indicators Parameters. Read the Help file for each indicator for more information. In the case of the RSI range parameter. The input is added to 50% and subtracted from 50% to create the RSI range band. So an input of 20% creates band lines at 70% (50+20) and 30% (50-20).
- Dividend Dates and Yields. All dividend values online since Jan 2004.
- Splits and split dates. All splits online since 1997.

The stock name and a news link are provided above the stock chart.